

Diverse Product Series

多元化产品系列

开顶箱 / Open Top Container

产品简介/product information:

开顶箱为一种可直接从顶部装卸货物的集装箱，采用竹木或钢质地板，适合装载各类大型货物，装卸效率高，运输成本低。太仓中集可根据不同顾客需求，设计和定制各种类型的开顶箱，如软开顶箱、硬开顶箱、敞顶箱、滑移开顶箱等。

Open top container suits the loading and unloading of various large cargoes from the top. It uses bamboo wood or steel floor, with high efficiency and low transportation cost. CIMC Taicang can tailor the design like non-lid container, soft open top container, hard open top container, sliding open top container and etc.

产品参数/product parameters:

箱型(Type)	外形尺寸(External) 长×宽×高(L×W×H)(mm)	箱内尺寸(Internal) 长×宽×高(L×W×H)(mm)	总重 (Max Gross Weight)(KG)
20'GP Soft Opentop Container	6058×2438×2591	5898×2352×2348	30480/32500
40'HC Soft Opentop Container	12192×2438×2896	12032×2352×2653	30480/32500
20'GP Hard Opentop Container	6058×2438×2591	5895×2350×2390	32500
40'HC Hard Opentop Container	12192×2438×2896	12032×2352×2612	30480
20英尺35吨敞顶箱	6058×2550×2896	5897×2438×2713	35000
20英尺35吨敞顶箱 (前端带上翻门)	6058×2550×2896	5884×2415×2713	35000

产品图示/Product Showcase:



托盘宽箱 / Pallet Wide Container

产品简介/product information:

托盘宽箱是一种可实现两排托盘并列排放的集装箱，可匹配多种规格的托盘排布，较ISO标准集装箱有更大的箱内宽度，可容纳更多数量的托盘，从而提高装载效率。太仓中集可提供各种适用于美洲、澳洲、欧洲、亚洲等不同区域市场的托盘宽箱产品。

With wider internal width to load two rows of pallets, Pallet Wide container is popular for higher efficiency and more environmental friendly. CIMC Taicang can offer variety of pallets wide containers for Europe, Australia, America and Asian markets.

产品参数/product parameters:

箱型(Type)	外形尺寸(External) 长×宽×高(L×W×H)(mm)	箱内尺寸(Internal) 长×宽×高(L×W×H)(mm)	总重 (Max Gross Weight)(KG)
20'HC CPC	6058×2462×2896	5922×2418×2689	30480
40'HC CPC	12192×2462×2896	12095×2422×2692	34000
40'HC PW	12192×2500×2896	12095×2444×2692	34000
45'HC PW	13716×2500×2896	13556×2444×2694	34000

产品图示/Product Showcase:



散货箱 / Bulk Container

产品简介/product information:

散货箱是一种可从顶部装料，端部或底部卸料的集装箱，适用于装载各类粉状或颗粒状散货货物，装卸散货效率高。太仓中集可根据顾客需求和不同类型散装货物定制集装箱化综合物流解决方案，包括粮食、化肥、PTA、化工原料、氧化铝粉等。

Bulk Container can be loaded from the top and discharged from the end or bottom, suitable for efficient loading all kinds of powder or granular bulk cargo. CIMC Taicang is fully capable of designing and manufacturing diverse bulk containers for grain, fertilizer, PTA, chemical raw materials, alumina powder, etc. to meet with customers' needs.

产品参数/product parameters:

箱型(Type)	外形尺寸(External) 长×宽×高(L×W×H)(mm)	箱内尺寸(Internal) 长×宽×高(L×W×H)(mm)	总重 (Max Gross Weight)(KG)
20' Bulk Container	6058×2500×2591	5899×2418×2389.5	30480
20' HC Bulk Container	6058×2462×2896	5857×2380×2681.5	34850
30' Bulk Container	9125×2550×2743	8951×2478×2543	34000
40' Bulk Container	12192×2438×2743	12032×2366×2518	33980

产品图示/Product Showcase:



侧开门箱&侧帘箱 / Side Open Container & Curtain Side Container

产品简介/product information:

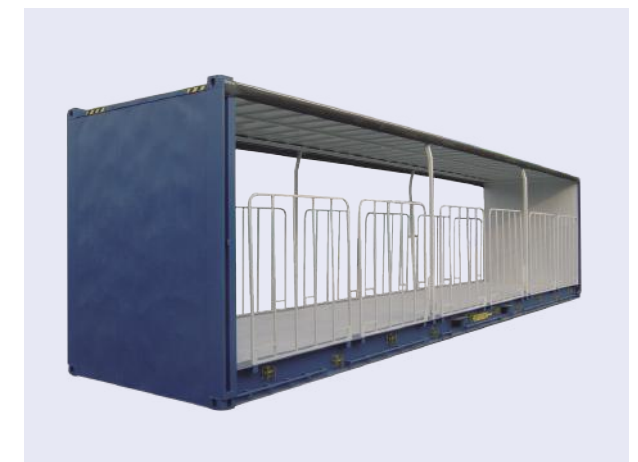
侧开门箱&侧帘箱是一种能同时满足货物从端门及侧门装卸的集装箱，装卸效率高，其侧面可适用超大尺寸货物的装卸。

Satisfying operation from both door ends and side way, Side Open Container & Curtain Side container can enhance efficient and safe operation of special oversized cargoes.

产品参数/product parameters:

箱型(Type)	外形尺寸(External) 长×宽×高(L×W×H)(mm)	箱内尺寸(Internal) 长×宽×高 (L×W×H)(mm)	总重 (Max Gross Weight)(KG)
20' One-Side Open Container	6058×2438×2591	5952×2288×2254	24000
20' One-Side Open with Reardoor Container	6058×2438×2591	5898×2288×2254	24000
20' One-Side Open with Reardoor Container	6058×2438×2896	5898×2288×2608	30480
20' Double-Side Open with Reardoor Container	6058×2438×2591	5898×2224×2254	24000
40' One-Side Open with Reardoor Container	12192×2438×2896	12033×2291×2698	24000
40' Curtain Side Container	12192×2502×2997	12056×2446×2597	35000
45' Curtain Side Container	13716×2550×2896	13555×2458×2493	34000

产品图示/Product Showcase:



53'&60'超大干货箱 / 53' &60' Oversize Dry Cargo Container

产品简介/product information:

53'&60'超大干货箱是一种超大型干货集装箱，货物装载量大，运输效率高，目前已广泛应用于北美地区的多式联运。太仓中集能够提供高品质的全系列53'和60'超大干货箱。

The oversize 53'&60' dry cargo containers have been widely used for intermodal transportation in North America area, with large loading capacity and high transportation efficiency. CIMC Taicang can supply full range of 53' and 60' with high quality.

产品参数/product parameters:

箱型(Type)	外形尺寸(External) 长×宽×高(L×W×H)(mm)	箱内尺寸(Internal) 长×宽×高(L×W×H)(mm)	总重 (Max Gross Weight)(KG)
53' Dry Container	16154×2591×2908	15994×2505×2792	30480
	16154×2599×2908	16000×2550×2781	30480
	16154×2600×2908	16020×2526×2781	30480
	16154×2591×2908	15972×2438×2781	38560
	16154×2600×2908	15995×2514×2759	30480
60' Dry Container	18288×2591×2908	18100×2438×2781	36520

产品图示/Product Showcase:



平台框架箱&滚装产品 / Platform & Ro-Ro Product

产品简介/product information:

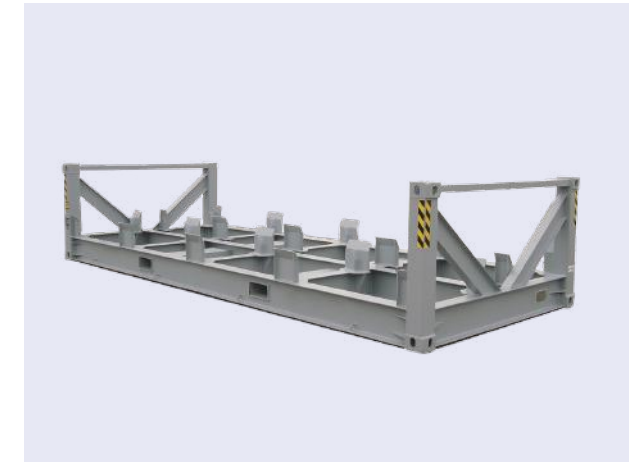
平台框架箱&滚装产品是一种以超重、超宽货物为主要运载对象的物流运输装备，能够实现与货物一起整体吊装和运输。返程时，可将空置平台底架堆叠后打包运输，节省运输空间和成本。

Platform & Ro-Ro product, which is designed for oversize and super-heavy cargo, can realize lifting and transporting as a whole together with the cargo. It is welcomed for space saving and lower transportation cost when stacking and packing together for the round trip.

产品参数/product parameters:

箱型(Type)	外形尺寸(External) 长×宽×高(L×W×H)(mm)	箱内尺寸(Internal) 长×宽×高(L×W×H)(mm)	总重 (Max Gross Weight)(KG)
20' Platform	6058×2438×236		21720 /30480
40' Platform	12192×2438×648		30480
40' Fixed-end Flat Rack	12192×2438×2896	11742×2396×2260	30480
45' Fixed-end Flat Rack	13716×2438×2896	13266×2378×2302	30480
40' 100T Roll Trailer	12635×2550×700		100T (Payload)
62' 100T Roll Trailer	19585×2550×800		100T (Payload)
Cassette	12250×2600×868		60T (Payload)
Trestle	2782×600×1098		

产品图示/Product Showcase:



房屋箱 / Accommodation Container

产品简介/product information:

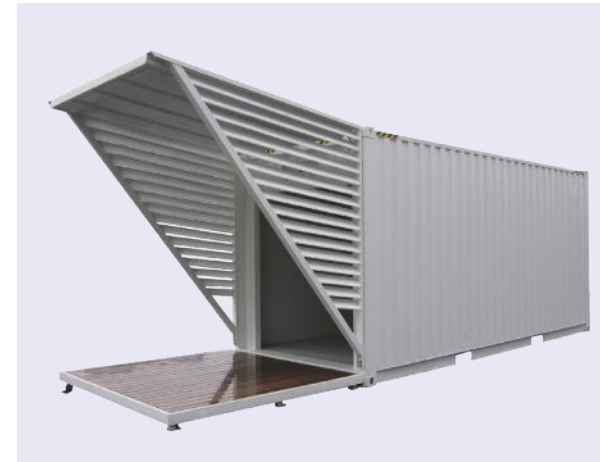
房屋箱是一种用于移动办公、居住、展览等用途的模块化产品，所有配置和尺寸可根据客户个性化需求设计和定制，广泛应用于矿区、电力建设、野外等场所区域。

Accommodation Container is a module product for purposes like mobile office, residential, exhibition and so on. All configurations and sizes can be customized to individual requirements. It is widely applied in sites like mining areas, electrical construction and outdoor scenes.

产品参数/product parameters:

箱型(Type)	外形尺寸(External) 长×宽×高(L×W×H)(mm)	箱内尺寸(Internal) 长×宽×高(L×W×H)(mm)	总重 (Max Gross Weight)(KG)
20'HC Accommodation Container	6058×2438×2896	5900×2270×2600	8000
40'HC Accommodation Container	12192×2438×2896	12037×2270×2580	8000
40'×3m Wide Accommodation Container	12192×3000×2896	11982×2794×2650	30480

产品图示/Product Showcase:



运车箱 / Car Carrier

产品简介/product information:

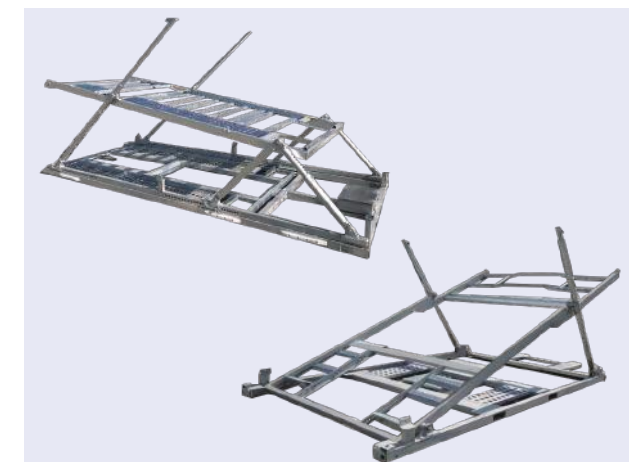
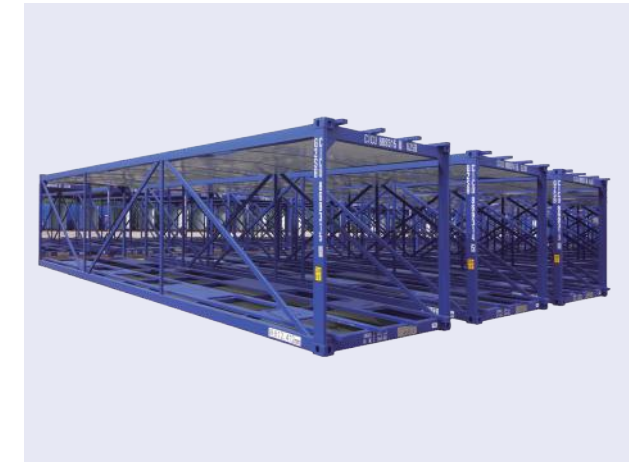
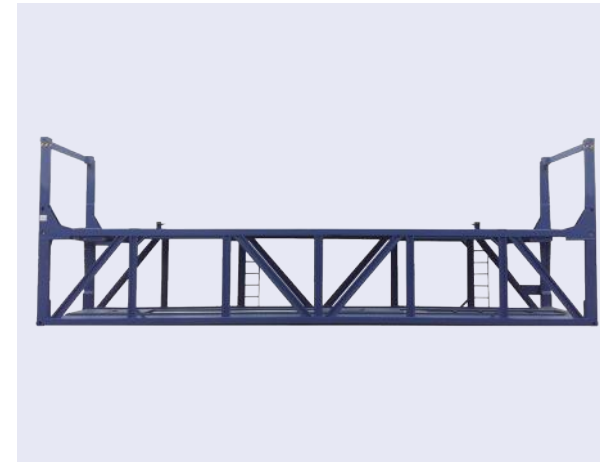
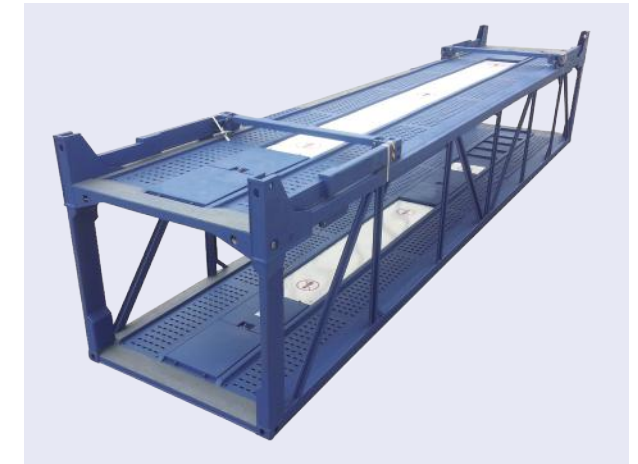
运车箱是一种集装箱化运输及存储车辆的物流解决方案，操作简便快捷、运输安全可靠。太仓中集可提供多种类型的运车箱产品，包括单层运输箱、双层运输箱、双层运输架等。

Car Carrier is working as containerization logistic and stocking solution for vehicle with efficient handling and reliable transportation. CIMC Taicang can provide various designs of car carriers, including single-deck or double-deck, container or rack.

产品参数/product parameters:

箱型(Type)	外形尺寸(External) 长×宽×高(L×W×H)(mm)	箱内尺寸(Internal) 长×宽×高(L×W×H)(mm)	总重 (Max Gross Weight)(KG)
20'HC Car Carrier	6058×2550×3150	5920×2503×2954	23000
40'HC Car Carrier	12192×2438×2896	12032×2352×2578	32500
Trans-Rak Frame	11980×2300×483		8850

产品图示/Product Showcase:



交换体箱 / Swapbody

产品简介/product information:

交换体箱是一种底架上设有四根可折叠支撑腿的集装箱，适用于甩挂运输，方便快捷、装卸效率高。该产品可根据客户个性化需求进行配置，如卷帘端门、侧面全开等。

With four up-folding legs under the bottom frame, Swapbody makes the drop and pull convenient, efficient and safe.

产品参数/product parameters:

箱型(Type)	外形尺寸(External) 长×宽×高(L×W×H)(mm)	箱内尺寸(Internal) 长×宽×高(L×W×H)(mm)	总重 (Max Gross Weight)(KG)
C745 Curtain Side Swapbody	7450×2550×2750	7289×2472×2565	18000
C745 Open Side Swapbody	7450×2550×2950	7336×2482×2701	18000
C782 End Door Swapbody	7820×2550×2900	7706×2488×2671	18000
C782 Open Side Swapbody	7820×2550×2950	7706×2482×2701	18000

产品图示/Product Showcase:



矿石箱 / Ore Carrier

产品简介/product information:

矿石箱是一种用于矿物运输的专用集装箱，适用于采矿业各类铁、铜、镍等矿石及矿粉的运输，具有安全、环保、容量大、残留少的优点，能够显著提高货物的装载效率，降低货物流转环节中的损耗，受到澳洲、南美、非洲等市场的广泛欢迎。

Ore Carrier is a kind of special containers for mineral transportation, like iron, copper, nickel in mining industry. It can sufficiently improve the handling efficiency and reduce the loss during transportation, thus very welcomed in Australia, South America, Africa and more new markets.

产品参数/product parameters:

箱型(Type)	外形尺寸(External) 长×宽×高(L×W×H)(mm)	箱内尺寸(Internal) 长×宽×高(L×W×H)(mm)	总重 (Max Gross Weight)(KG)
Half-Height Ore Carrier without roof	6058×2438×1450	5865×W×1214	35000
Hard Open top Ore Carrier	6058×2438×1800	5894×2726×1577.5	43000
	6058×2438×1800	(2928×2) ×2276×1515.5	43500
	6058×2438×2000	(2928×2) ×2276×1715.5	38000

产品图示/Product Showcase:



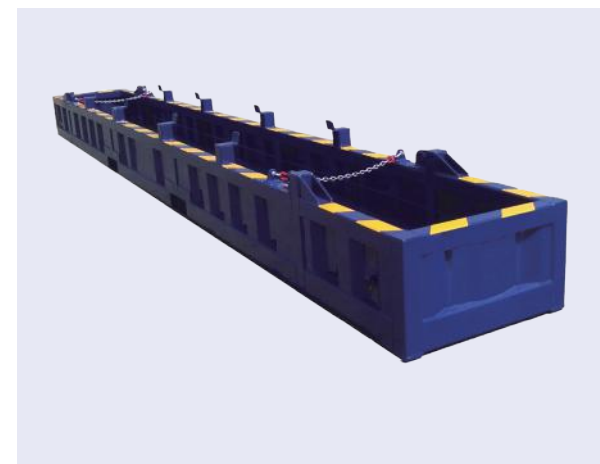
近海集装箱 / Offshore Container

产品简介/product information:

近海集装箱是一系列用于海上石油钻探平台货物的转运、储存的物流装备以及用于办公场所和监控测试设备的设施。太仓中集可按照DNV2.7-1/2/3、ISO10855-1/2/3或EN12079等标准设计、制造全系列近海货运集装箱、近海垃圾箱及近海服务集装箱等近海集装箱产品。

Widely applied in drilling platform for cargo transit and storage, Offshore Container can also be used as office or accommodation. Equipped with monitoring and testing installation, the offshore containers can ensure the safe operation of the platform. CIMC Taicang is capable of supplying a full serial of offshore containers designed and manufactured according to DNV2.7-1/2/3、ISO10855-1/2/3 or EN12079 standard, like offshore cargo container, offshore garbage disposal container and offshore service containers etc..

产品图示/Product Showcase:



环保集装箱 / Environmental Container

产品简介/product information:

环保集装箱是一种用于垃圾运输的集装箱，可将垃圾转运、垃圾压缩、填埋或焚烧等形成闭环处理系统。该环保集装箱产品操作简便，运输快捷高效，并且可靠性好，可显著减少垃圾运输过程造成的环境污染。

Environmental Container, a kind of waste transportation container, can form a closed-loop treatment system for waste transfer, waste compression, landfill and incineration. It's reliable, efficient and easy to operate, significantly reducing the environmental pollution during the transportation process.

产品参数/product parameters:

箱型(Type)	外形尺寸(External) 长×宽×高(L×W×H)(mm)	箱内尺寸(Internal) 长×宽×高(L×W×H)(mm)	总重 (Max Gross Weight)(KG)
20' Environmental Container	6058×2438×2438	5828×2150×2214	20000
20' Double-door Environmental Container	6058×2438×2438	5784×2150×2215	20000
40'GP Soft open top Environmental Container	12192×2438×2591	12014×2233×2330	34900
48'HC Soft open top Environmental Container	14630×2438×2743	14452×2233×2482	41470

产品图示/Product Showcase:



钢卷箱 / Coil Carrier

产品简介/product information:

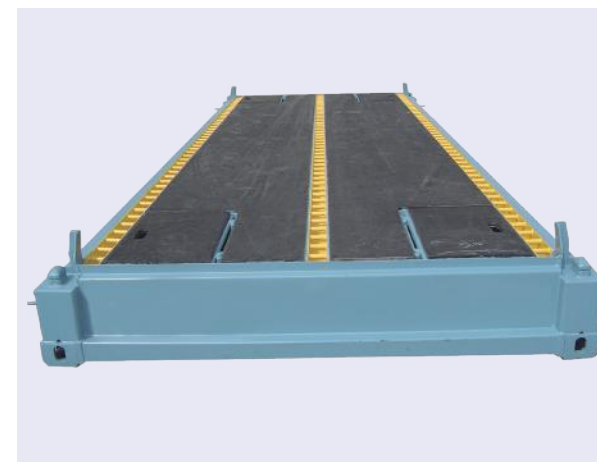
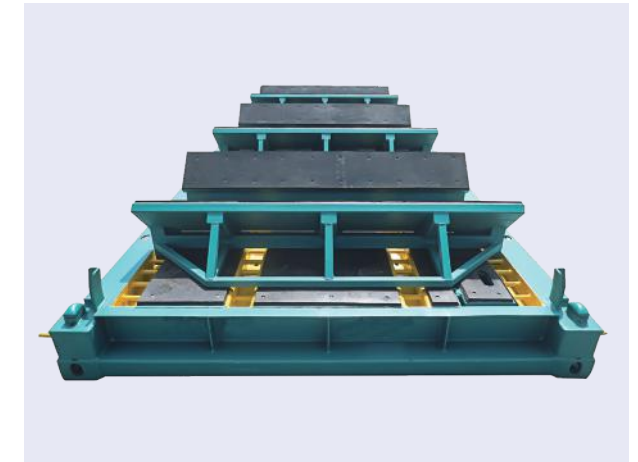
钢卷箱是一种专门用来运输高价值钢卷货物的集装箱，具有安全可靠，运输成本低等优势，可以实现钢卷货物的国际多式联运。太仓中集可根据顾客个性化需求设计和定制各种类型的钢卷箱产品，如开顶式钢卷箱、侧开门钢卷箱、半高钢卷箱、平台钢卷箱等。

Coil Carrier is designed for intermodal transportation of high-value steel coil cargoes with advantages of safety, reliability, and low transportation costs. CIMC Taicang can tailor different kinds of coil carriers according to customers' individual needs, such as open top, side opening doors, half height and platform carrier.

产品参数/product parameters:

箱型(Type)	外形尺寸(External) 长×宽×高(L×W×H)(mm)	箱内尺寸(Internal) 长×宽×高(L×W×H)(mm)	总重 (Max Gross Weight)(KG)
20' Steel Coil Platform	6058×2438×1200	5924×2252×842	13500
20' GP Steel Coil Carrier	6058×2438×2591	5899×2342×2238	34000
20' HC Steel Coil Carrier	6058×2500×2896	5885×2240×2584	35800
20' HC Steel Coil Carrier	6058×2550×2896	5897×2438×2713	35000

产品图示/Product Showcase:



集装箱储能系统 / Container Energy Storage System

产品简介/product information:

集装箱储能系统（CESS）是一种针对移动储能市场的需求开发的集成化储能系统，其内部集成电池柜、电池管理系统（BMS）、集装箱动环监控系统，并可根据客户需求集成储能变流器和能量管理系统。集装箱储能系统具有简化基础设施建设成本、建设周期短、模块化程度高、便于运输和安装等特点，能够适用于火力、风能、太阳能等电站或海岛、小区、学校、科研机构、工厂、大型负荷中心等应用场合。

CESS is an integrated energy storage system developed for the needs of the mobile energy storage market. It has battery cabinets, battery management system (BMS), container dynamic loop monitoring system, and can integrate energy storage converter and energy management system according to customers' needs. CESS has the characteristics of simplified infrastructure construction cost, short construction period, high modularity, easy transportation and installation, etc.. It can be applied to thermal, wind and solar power plants, or islands, communities, schools, research institutions, factories, large load centers and other sites.

产品图示/Product Showcase:



Star products

明星产品

重载钢地板集装箱 / Heavy Duty Steel Floor Container

产品简介/product information:

“重载钢地板集装箱”产品是太仓中集研发设计和制造的一种新一代先进物流运输装备，适合全球范围内的国际多式联运。相比现有标准干货集装箱，其采用了盲波形钢质地板设计，箱体结构强度更好，载重能力和运输效率更高，使用成本更低，产品绿色环保，且更易于清理和维护。

该产品具备显著的市场竞争优势。自投放市场以来，因其各项关键指标显著领先于国家标准和国际标准，已取得良好的经济效益和社会效益。2021年，我司该“重载钢地板集装箱”产品获得了“苏州制造”品牌认证。

Heavy Duty Steel Floor Container is a new type of advanced logistics transportation equipment designed and manufactured by CIMC Taicang, and suitable for intermodal transportation. Compared with standard dry cargo containers, it adopts the blind waveform steel floor design, with better structural strength, higher load capacity and transportation efficiency. This eco-product costs less and easier to clean and maintain.

The product has significant competitive advantages. Since its launch in the market, it has achieved good economic and social benefits with its key indicators which are ahead of national and international standards. In 2021, our "heavy load steel floor container" was certified by brand of "Made in Suzhou".



产品图示/Product Showcase:



移动式远程检疫检查工作站

/ Mobile Remote Quarantine Inspection Workstation

产品简介/product information:

“移动式远程检疫检查工作站”是由太仓中集根据国家检疫需要及海关港口码头升级检疫检查手段的迫切需求而专门研发的一款产品装备。

该产品箱体包括底部、顶部、两侧部及两端部，具备可移动式的消毒检测以及远程检疫查验等功能。它能够充分利用现代数字化技术，实现港口码头海关人员无需上船便可直接通过远程控制系统对船员开展实时监控、语音沟通、远程控制消毒、证件资料的远程拍照和查验、两道测温等检疫检查工作。有效避免人员直接接触，省去人员往来的交通时间，检疫检查工作效率和安全性成倍提升。该产品可采用外接电源或储能系统两种供电方式。采用储能系统供电时至少可以完成3条船舶的检疫检查任务，具有较强的环境适应性。此外，该产品还能够利用现有成熟的集装箱运输系统及各种吊运设备，方便快速部署到目的地开展检疫工作。

Mobile Remote Quarantine Inspection Workstation is an equipment specially developed by CIMC Taicang based on needs of national quarantine and upgrading quarantine inspection means at customs ports and terminals.

The product includes the bottom, top, both sides and ends, having functions of mobile disinfection detection and remote quarantine inspection. It makes full use of modern digital technology to realize quarantine inspection work such as real-time monitoring, voice communication, remote disinfection control, remote photographing and checking of documents, and two temperature measurements of the crew through the remote control system without going on board. Quarantine inspection efficiency and security multiplied by avoiding direct contact and saving travel time. This product can be powered by either an external power supply or an energy storage system. It has a strong environmental adaptability when using the energy storage system power supply, and can complete at least 3 ships' quarantine inspection. In addition, this product can also utilize existing mature container transportation systems and various lifting equipment to quickly reach the destination for quarantine inspection.

产品图示/Product Showcase:

